

A microscopic view of several cancer cells, appearing as irregular, textured spheres in shades of red and pink, set against a dark blue background with faint light rays. The cells are clustered together, with some showing internal structures.

**The future of  
cancer treatment**

---

**Combining  
stem cells and  
immunotherapy**

---

**Transforming  
cancer from a  
fatal disease to  
a manageable  
condition**

**CAR**herics



## CARTHERICS PTY LTD

The future of cancer treatment – combining stem cells and immunotherapy.

Melbourne based Cartherics Pty Ltd leads a \$2.987 million Department of Industry, Innovation and Science Co-operative Research Centre project in partnership with the Hudson Institute of Medical Research, Monash University, Mesoblast Ltd and Cell Therapies Pty Ltd.

Cartherics is:

- Working towards a new class of cancer treatments beyond surgery, chemotherapy, biologicals and radiation.
- Supercharging a patient's own immune system, making it better able to eliminate cancer.
- Seeking to develop accessible 'off-the-shelf' immunotherapies to fight aggressive forms of cancer, including relapsed ovarian and gastric cancers.

Transforming cancer from a fatal disease to a manageable condition.

## OUR VISION

From the laboratory to the marketplace.

The Cartherics team's strong background in successful research, development, clinical testing and commercialisation of pharmaceutical products and medical services makes it exceptionally well placed to drive an innovative company achieving successful clinical and commercial outcomes.

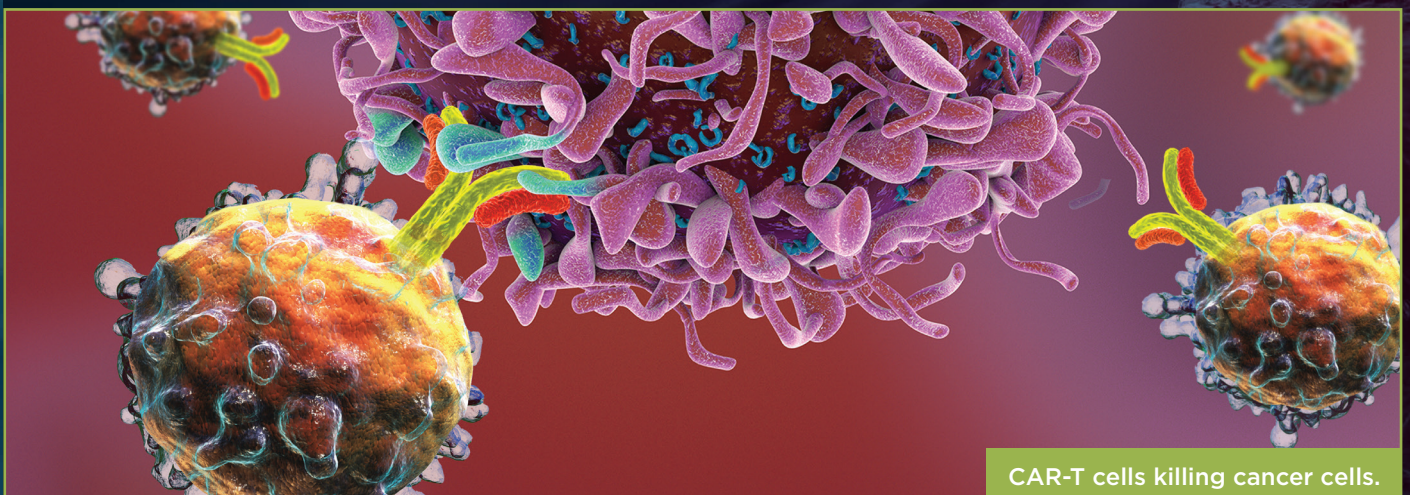
## OUR EXPERTISE

- Clinical trials management
- T cell specialisation
- Stem cell research
- International experience
- Product commercialisation
- Financing
- Preclinical R&D
- Immunotherapy research
- Oncology expertise
- Strategic partnerships
- Grant acquisition
- Business development/licensing

## OUR NETWORK

- Is closely aligned with leading cancer research groups: The Peter MacCallum Cancer Centre and their partners at the new Victorian Comprehensive Cancer Centre and The Epworth Medical Centre.
- Maintains a strong research base at the Hudson Institute for Medical Research and Monash University and its affiliated clinical institutes of Monash Health.
- Has excellent connections to leading companies in the areas of cell therapy, regenerative medicine and oncology therapeutics.

Cartherics and its network of collaborators is helping to build a sophisticated vertically-integrated immunotherapy industry in Australia.

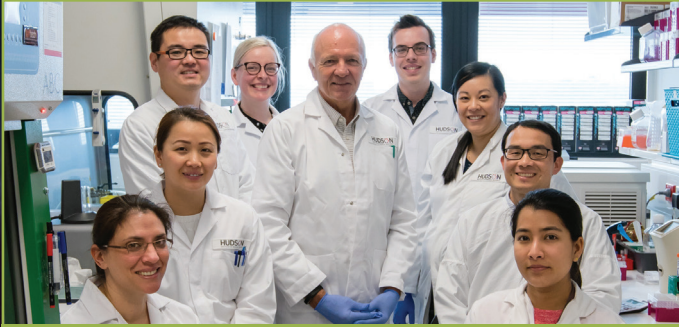


CAR-T cells killing cancer cells.



## OUR TEAM

**Cartherics' four founders** have extensive local and international scientific, product development, business and commercial experience and have ongoing roles with the Company. They have a strong track record in the industry as well as the expertise and influence to drive the Company.



The Cartherics Science Team.

To complement the founding team Cartherics has:

- Eminent scientists and clinical advisors able to provide feedback at technical, clinical and scientific levels and to review models and materials to be incorporated by the Company.
- Key consultants to ensure best business and regulatory practice at all times.
- Board members with extensive experience in life science companies, IP and commercial law, and health technology accounting.
- Scientists who are dedicated, hardworking and currently developing cutting edge technologies to enable Cartherics' stem cell-based 'off the shelf' immunotherapeutic products.

Cartherics team members in our state-of-the-art laboratory.



## OUR TECHNOLOGIES

'Super charging' the immune system to fight cancer.

In healthy individuals, immune system cells called T cells identify and kill infected or abnormal cells, including cancer cells. Cartherics is harnessing the body's immune system to target and kill cancer by arming T cells with 'seek and destroy' capacity.

Cartherics is engineering two technologies to destroy cancer cells:

- **CAR (Chimeric Antigen Receptor):** CARs are engineered molecules that, when present at the surface of T cells, recognise cancer cells and activate killer T cells.
- **TCR (T cell receptor):** TCRs are naturally occurring molecules on a T cell. TCRs can be engineered to better recognise cancer cells, enabling T cells to kill them more efficiently.

Cartherics:

- Has filed patent applications on its technologies.
- Has established collaborations with leading commercial and academic groups with complementary technology to develop novel products.
- Is creating a portfolio of state-of-the-art intellectual property to support the commercialisation of affordable, effective CAR-T technology.



Cartherics uses both CARs and TCRs to provide enhanced tumour cell recognition and their destruction – the basis of our 'GoldiLox™' products.



## JOIN THE TEAM

Cartherics Pty Ltd is an Australian proprietary company limited by shares. Incoming investors receive shares in Cartherics Pty Ltd.

CAR-T cell therapies show potential to treat many cancers without the side effects of chemotherapy and radiation.

- Existing CAR-T treatments are difficult to manufacture and, in the territories where they are currently approved, cost as much as AUD\$500,000.
- Cartherics' 'off-the-shelf' approach will simplify the manufacturing and distribution process, providing the potential to reach massively more patients.

Cartherics has committed funding of AUD\$5 million under a Series A financing round and a further AUD\$3.75 million under a Series B financing round, together with grant funding of almost AUD\$3.5 million. It plans to increase its total funds available by another AUD\$3-5 million through a Series C financing round in 2019 to drive the first in-man clinical trials for cutaneous T cell lymphoma and/or ovarian cancer using Cartherics' first product, designated CTH-01.

Cartherics has substantial growth potential. It is modestly valued at AUD\$40 million (as at the close of Series B). Competitors are valued from USD\$600 million to USD\$10 billion.

## CARTHERICS LABORATORIES

Level 7 Monash Health Translation Precinct

The AUD\$84 million state-of-the-art Translational Research Facility at the Hudson Institute of Medical Research was completed in October 2015.

It co-locates research, clinical and technological platforms to facilitate collaboration of researchers and clinical partners to accelerate and coordinate the translation of scientific breakthroughs.



# CARtherics

## CONTACT US

+61 3 8572 2500

[info@cartherics.com](mailto:info@cartherics.com)

[www.cartherics.com](http://www.cartherics.com)